

SafeRing/SafePlus Air 12 kV 630 A

Gas-insulated ring main unit and compact switchgear



The Safe Air is a gas insulated ring main unit (RMU) with dry air as insulation medium: The eco-efficient solution for ring-cable networks up to 12 kV.

As alternative to SF₆, Safe Air helps users with a green focus to reduce the climate impact of their distribution grid:

- Global Warming Potential (GWP) of 0
- No SF₆ regulations - today and in the future
- Same compactness as SafeRing with SF₆
- True GIS - independent from ambient air

Independent from ambient conditions

Safe Air is a true GIS switchgear with a sealed stainless steel gas tank containing all live parts and switching functions.

Safe, reliable and maintenance-free

The constant gas conditions in the encapsulation ensure a high level of reliability as well as personnel safety and a virtually maintenance-free system.

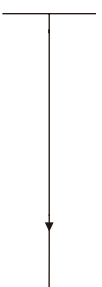
Eco-efficient with 100% dry air

The Safe Air completely avoids the use of SF₆, and is the ideal solution for customers with a green focus. This avoids any actions and costs related to the regulations for SF₆ - now and in the future!

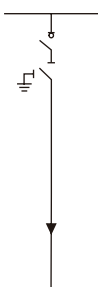
Known Safe compactness

Like the proven Safe with SF₆ insulation, the Safe Air is the most compact solution on the market - ideal for utility, CSS, light industry and building applications up to 12 kV.

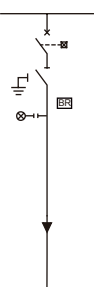
D - Direct cable connection



C - Cable switch



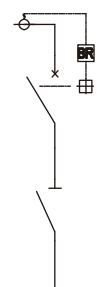
V - Vacuum circuit-breaker



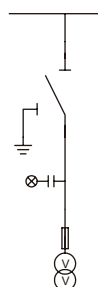
SLBR - Busbar Sectionalizer



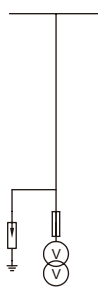
SVBR - Busbar Sectionalizer with VCB



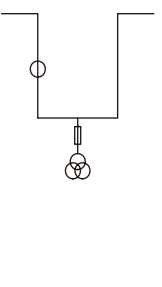
PTC - PT panel with disconnecter



PT panel



M panel



Ambient Temperature

- Maximum value +40°C
- Maximum value of 24 h mean +35°C
- Minimum value -25°C/-40°C¹⁾

Humidity

- Maximum value of 24h mean ≤95%
- Maximum value of month mean ≤90%
- Installation altitude ≤1500 m/3000 m¹⁾

1): Need in form ABB

- Insulation gas Dry Air
- Rated pressure 1.4 bar at 20°C
- Gas leakage ≤ 0.05 %/year
- IAC test IAC AFLR 20 kA 1 s
- IP degree
 - Gas tank IP 67
 - Enclosure IP 4X
- Color
 - Front cover RAL7035
 - Cable room cover RAL7035

		V module	C module	PTC module
		Vacuum interrupt	Vacuum interrupt	PT panel with disconnect
Rated voltage	kV	12	12	12
Power frequency	kV	42/48	42/48	42/48
Lighting impulse	kV	75/85	75/85	75/85
Rated current	A	630	630	
Main circuit STC	kA/s	20/4	20/4	20/4
Short circuit breaking current	kA	20		
Active load current	A		630	
Making capacity	kA	50	50	
- Earthing switch		50 (5C)	50 (5C)	
Electrical endurance		E2	E3	
Mechanical endurance		5000	5000	
- DS/ES		3000/3000	3000/3000	3000/3000
Operation sequency		O-3 min -CO-3 min-CO		



Unit	Width
1way	371
2way	696
3way	1021
4way	1346
5way	1671

All rights reserved. We reserve the right to make change in the course of technical development.